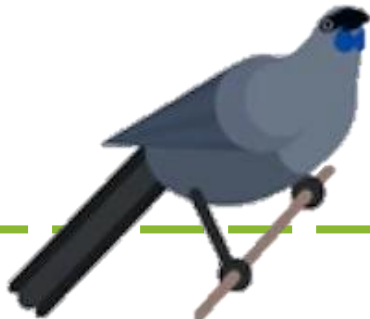


# How can you help us?



2022-2023

Tasks or timeframes subject to change



## Pouiatoa

### Relurring/Regassing of A12 & A24

Join our field team as they check the re-setting traps in the Pouiatoa block – kōkako territory

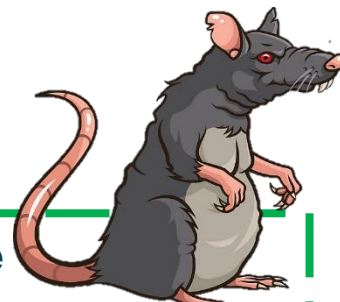
**Fitness:** High

This will be a full day and volunteers need to have a high level of fitness to tackle the steep ridges and be capable of carrying a heavy backpack around for the day.

**Number required:** 20-25 people

**When:** 6<sup>th</sup> August

Weather dependent. Alternative rain day: 13<sup>th</sup> August



## Everett Park Update

From ETEC baseline results, it was identified that traps need to be set out to target mustelids, rats, possums, and feral cats throughout Everett Park.

The traps will be checked and reset more frequently at the beginning to act as a quick initial knockdown of the pest populations due to the high levels found.

A total of 217 of the A24 traps would be set up throughout the main block of Everett Park to target rat populations.

Around the bush perimeter the traps would be set up every 50 metres, and within the interior the A24s would be set up every 50 metres along traplines, with 100 metres between the traplines. These traps would be re-gassed and re-lured every three months for the first year, and then every six months afterwards. This is to provide an initial quick knockdown of the rat population due to the high detection levels found in the baseline survey.



## Installing resetting traps

We will need help installing resetting traps: DOC 250's and Possum traps into Everett Park Reserve.

**Fitness:** Low- Medium

**Number required:** 2 per line

**When:** early 2022

## Monthly Trap checks

After installation we will need a team of volunteers to assist us with regular checks of our traps in Everett Park

**Fitness:** Low

**Number required:** 1-2 per line

**When:** Monthly

## Tree/Plant identification

We are wanting to install signs on some tracks. The signs are already built ready to be installed.

**Fitness:** low

**Number required:** 1 – 2

**Skills:** Knowledge of trees/plants

**When:** This will be any time over the summer.

## Community Day Clean up

- Weed control
- Clearing tracks
- Fence maintenance

**Fitness:** Low-Medium

**When:** July, November 2022 and March 2023

## Everett Park: Track maintenance

- Weed control
- Clearing tracks
- Fence maintenance

**Fitness:** Low-Medium

**Number required:** 1 – 2

**When:** Various and ongoing



**EAST TARANAKI**  
**ENVIRONMENT COLLECTIVE**  
Restoring Native Biodiversity. Protecting our Future. Together

## Workshop: trap box building

We will have another opportunity coming up to help us build trap boxes in our workshop for installing out in the field for both our core project and our expansion project area.

**Fitness:** low

**Number required:** 5-10

**When:** July 22 – January 2023

## Shopfront window displays

We need help with making our window an eye-catching and interesting display!

**Fitness:** low

**Number required:** Anyone keen, budding artist?

Love retail?

**When:** As required

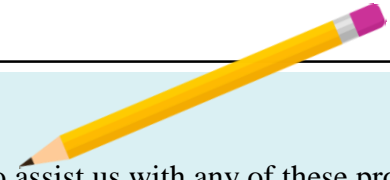
## To Register

If you are keen to assist us with any of these projects, please contact the office:

**Send an email:** [info@etec.org.nz](mailto:info@etec.org.nz)

**Drop into the office:** 53 Rata Street Inglewood

**Or call us:** 06 756 8925



## Photography

We need help in capturing those precious moments when we are out in the field with our kiwi and kōkako or during our events/working bees. Please help us showcase the project!

**Fitness:** Low - High (depending on the location)

**Number required:** 1 per event

**Where:** Various locations

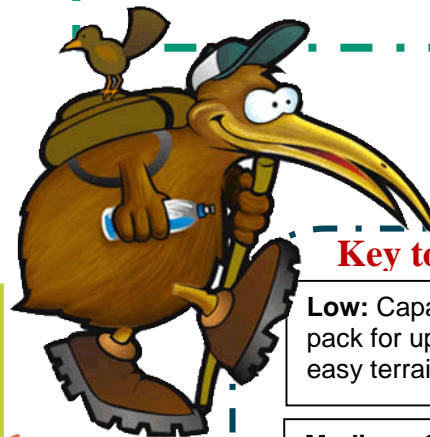
**When:** TBC

## Key to Fitness

**Low:** Capable of tramping with a pack for up to three hours over fairly easy terrain.

**Medium:** Capable of tramping with a pack for three to seven hours over sometimes difficult terrain.

**High:** Capable of tramping with a pack for eight hours or more over difficult terrain and sometimes arduous conditions. Be able to negotiate tracks with high drop-offs.



**Thanks  
to Our  
Volunteers!**

## VOLUNTEERS THANK YOU

Its time to celebrate all the great work that has been achieved – the team would love you to be there!

A great chance for our new volunteers to meet the team and each other! RSVP [info@etec.org.nz](mailto:info@etec.org.nz)

**Date:** Tuesday 12<sup>th</sup> July 2022

**Time:** 5-7pm

**Where:** ETEC Office 53 Rata street (next to Z station)

**Detail:** Light refreshments will be supplied